



Emergency Management

Risk Management Workshop

August 2024



Prepared. For Life.®



Learning Objectives (1:2)

- ***Identify potential wilderness emergencies and principle causes***
 - *Natural*
 - *Human Caused*
 - *Medical*
- ***Describe prevention strategies***
 - *Pre-Trek Conditioning*
 - *48-hour Shake-Down Skills Check*
 - *First Aid Kits*
 - *Qualified Leaders*





Learning Objectives (2:2)

- *Prepare effective escape routes off planned itinerary in case of emergency*
- *State why it is important to have a point of contact in the home area*
- *Develop a time control plan for a trek*
- *Conduct a safe, healthy, and enjoyable trek*





Planning for Emergencies

“What would happen if
_____ occurred?”



Prepared. For Life.®



Planning for Emergencies

- Extreme Weather
- Natural Disaster
- Human Mistakes/Accidents
- Medical/Health issues





Weather/Natural Disaster Related Emergencies

- Forecasted

- Hurricanes
- Severe Thunderstorms
- Flooding

- Predictable

- Monsoon
- Thunderstorm

- Natural Disasters

- Wildfire
- Earthquake
- Flash Flood
- Landslide
- Avalanche
- Microburst
- ...



Prepared. For Life.®



Reacting to a Weather/Natural Disaster Emergency

- Assess the situation
- Make a decision
- Initiate emergency plan
 - Call for help
 - Shelter in place
 - evacuate

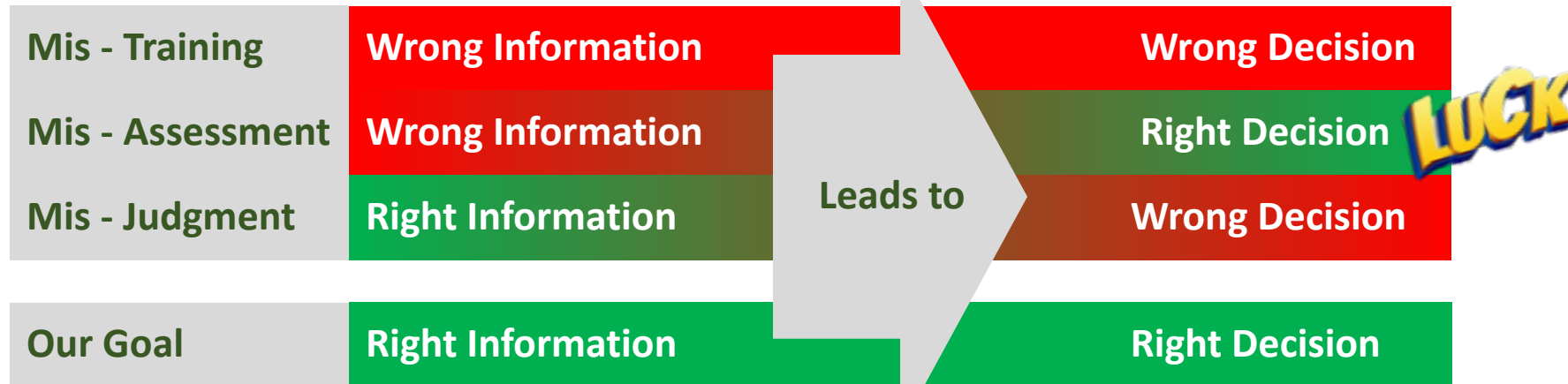


Prepared. For Life.®



Human Mistake Emergencies

- Foolish Mistakes
- Equipment Failure
- Miscalculations





Contributing Factors

Inadequate
skill

Overconfidence

Foolish Mistakes



Fatigue

Stress

Frustration

Crisis-panic



Prepared. For Life.®



Health/Medical Related Emergencies

- Motor Vehicle Accidents
- Drowning
- Major Trauma
- Bone and Joint Injuries
- Wounds
- Blisters
- Heat and Cold Injuries
- Burns and Scalds
- Sun Injury
- Diarrheal Disease
- Insect Bites
- Headache

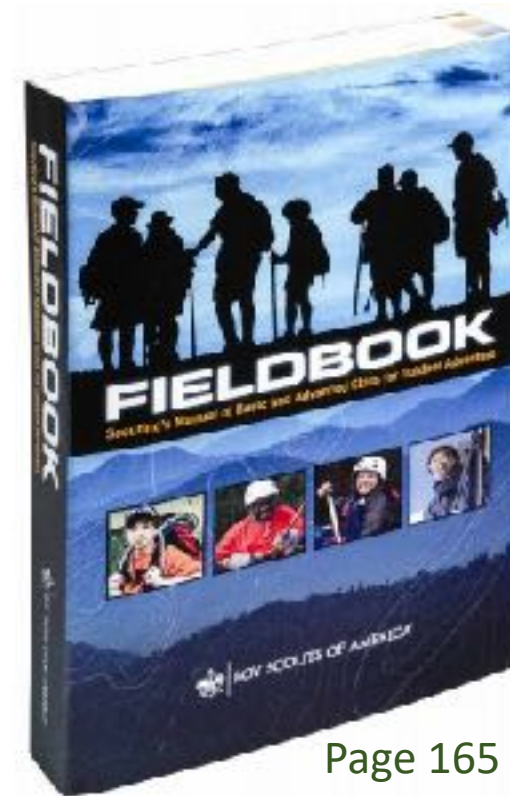


Prepared. For Life.®



Reacting to a Health Emergency

- Survey the Scene
- Approach safely
- Provide Urgent treatment
- Summon Aid
- Protect from Further Injury
- Treat Every Patient for Shock
- Make thorough Examination



Page 165



Prepared. For Life.®



Make a Thorough Examination

- Check responsiveness of the patient
- Complete primary survey of patient and care for ABC's
- Complete a secondary survey of patient (head to toe)
- Monitor vitals
- Record on SOAP Form

SOAP Form

PATIENT NAME: _____ DATE: _____

TIME: _____

S

O

A

P





Evacuate or Request Assistance

Self Evacuate

- Can the patient walk
- Will the patient be injured further
- Is there a compounding emergency
- Is it possible

Request Search and Rescue

- Head, neck, spine, or chest injury
- Cardiac arrest
- Shock
- Burns
- Lower limb fracture





Considerations When Requesting Assistance

- Send four individuals for help
- Copy of SOAP notes
- Written Incident report and assistance request
- Map with location
 - Incident
 - Group
- Notification priority





Emergency Plan Considerations

- First Aid
 - Qualified Leader
 - First Aid Kit
- Communication Plan
 - Cell Phone
 - Radio
 - SPOT Device
- Escape Routes





Route Planning & Escape Routes

- How much do you really know about the route?
 - Land manager resources & coordination
 - Good topographic maps
 - Aerial photographic maps
 - GPS routes
 - Pre-trek scouting by leaders
- Time Control Plan





Escape Routes



Start

Escape Route

Finish





Escape Routes

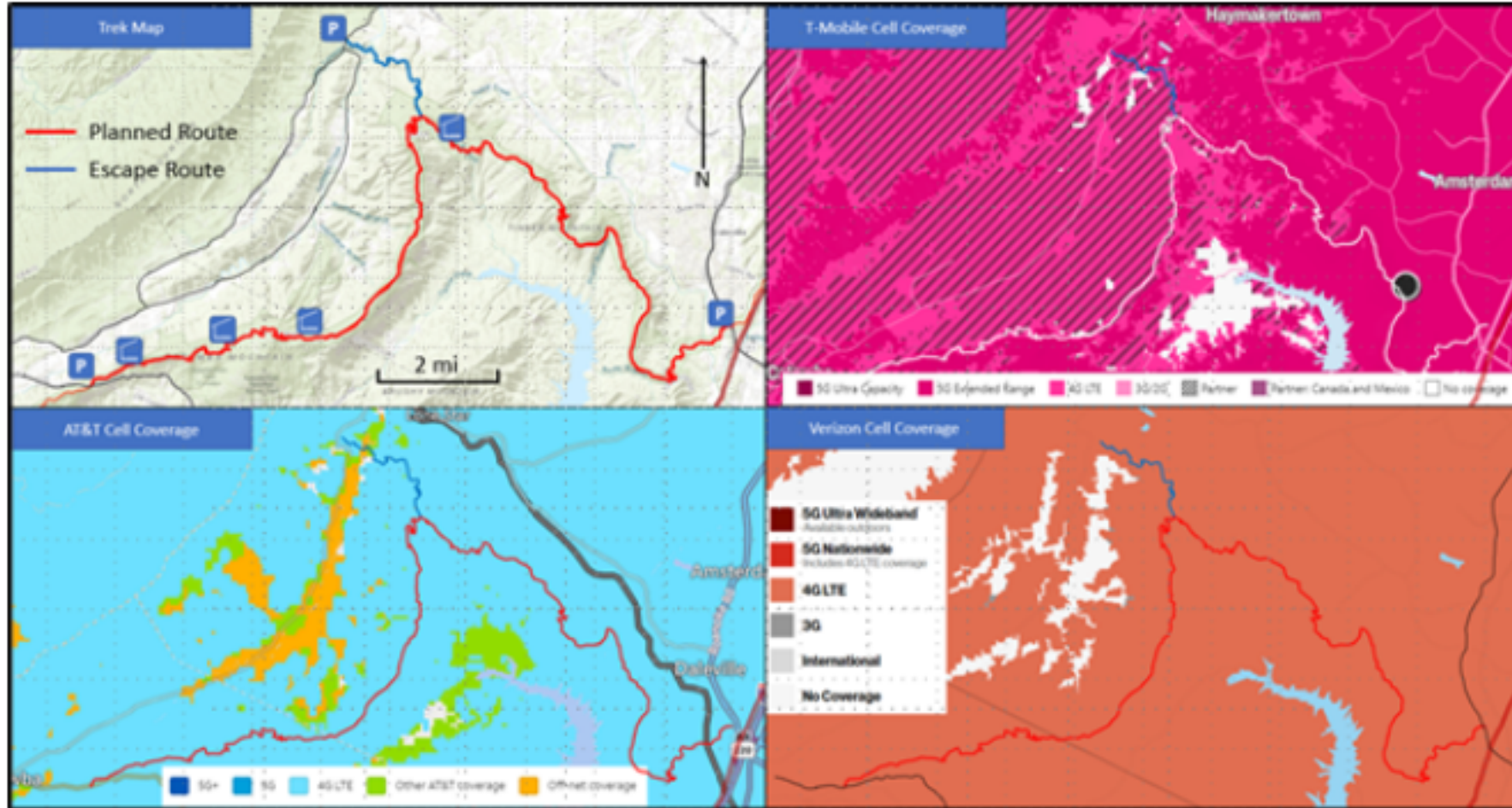


Fig. 5-3 Cell Phone Coverage Planning for Emergencies





Communicate the Plan

- Brief participants on emergency plan
- Discuss considerations
- Delegate and Assign roles
 - First Aid Staff
 - Scribe
 - Messengers
 - Assistants
- Identify where emergency resources are available





Emergency Management Practical Exercise

- Material Needed

- Program Hazard Analysis Worksheet
- Writing Utensil
- Trek Map

- Using the Program Hazard Analysis from the previous session and a trek map, do the following:

- Outline a basic emergency plan for the trek
- Map an escape route on the trek map
- Write an action plan for the emergency identified by your course leader





Reflection

1. What emergencies are most likely to occur during a Leave No Trace Instructor course?
2. How many escape routes should the course staff plan for?
3. What characteristics make a good escape route?





Prepared by
Joshua Lamothe
Date: March 2023
Revised July 2024 (JW)

Sources:

BSA Leave No Trace Master Educator Course Manual



Prepared. For Life.®